



# Test Report

No. CANEC1300498707

Date: 16 Jan 2013

Page 2 of 7

Test Results :

Test Part Description :

| Specimen No. | SGS Sample ID    | Description |
|--------------|------------------|-------------|
| 1            | CAN13-004987.007 | Grey paste  |

Remarks :

- (1) 1 mg/kg = 1 ppm = 0.0001%
- (2) MDL = Method Detection Limit
- (3) ND = Not Detected ( < MDL )
- (4) "-" = Not Regulated

**RoHS Directive 2011/65/EU**

Test Method : With reference to IEC 62321:2008

- (1) Determination of Cadmium by ICP-OES.
- (2) Determination of Lead by ICP-OES.
- (3) Determination of Mercury by ICP-OES.
- (4) Determination of Hexavalent Chromium by Colorimetric Method using UV-Vis.
- (5) Determination of PBBs / PBDEs content by GC-MS.

| Test Item(s)               | Limit | Unit  | MDL | 007 |
|----------------------------|-------|-------|-----|-----|
| Cadmium (Cd)               | 100   | mg/kg | 2   | ND  |
| Lead (Pb)                  | 1,000 | mg/kg | 2   | 25  |
| Mercury (Hg)               | 1,000 | mg/kg | 2   | ND  |
| Hexavalent Chromium (CrVI) | 1,000 | mg/kg | 2   | ND  |
| Sum of PBBs                | 1,000 | mg/kg | -   | ND  |
| Monobromobiphenyl          | -     | mg/kg | 5   | ND  |
| Dibromobiphenyl            | -     | mg/kg | 5   | ND  |
| Tribromobiphenyl           | -     | mg/kg | 5   | ND  |
| Tetrabromobiphenyl         | -     | mg/kg | 5   | ND  |
| Pentabromobiphenyl         | -     | mg/kg | 5   | ND  |
| Hexabromobiphenyl          | -     | mg/kg | 5   | ND  |
| Heptabromobiphenyl         | -     | mg/kg | 5   | ND  |
| Octabromobiphenyl          | -     | mg/kg | 5   | ND  |
| Nonabromobiphenyl          | -     | mg/kg | 5   | ND  |
| Decabromobiphenyl          | -     | mg/kg | 5   | ND  |
| Sum of PBDEs               | 1,000 | mg/kg | -   | ND  |
| Monobromodiphenyl ether    | -     | mg/kg | 5   | ND  |

This document is issued by the Company subject to its General Conditions of Service printed overleaf, available on request or accessible at [http://www.sgs.com/terms\\_and\\_conditions.htm](http://www.sgs.com/terms_and_conditions.htm) and, for electronic format documents, subject to Terms and Conditions for Electronic Documents at [www.sgs.com/terms\\_e-document.htm](http://www.sgs.com/terms_e-document.htm). Attention is drawn to the limitation of liability, indemnification and jurisdiction issues defined therein. Any holder of this document is advised that information contained hereon reflects the Company's findings at the time of its preparation only and within the limits of Client's instructions, if any. The Company's sole responsibility is to its Client and this document does not exonerate parties to a transaction from exercising all their rights and obligations under the transaction documents. This document cannot be reproduced except in full, without prior written approval of the Company. Any unauthorized alteration, forgery or falsification of the content or appearance of this document is unlawful and offenders may be prosecuted to the fullest extent of the law. Unless otherwise stated, the results shown in this test report refer only to the sample(s) tested.

## Test Report

No. CANEC1300498707

Date: 16 Jan 2013

Page 3 of 7

| <u>Test Item(s)</u>      | <u>Limit</u> | <u>Unit</u> | <u>MDL</u> | <u>007</u> |
|--------------------------|--------------|-------------|------------|------------|
| Dibromodiphenyl ether    | -            | mg/kg       | 5          | ND         |
| Tribromodiphenyl ether   | -            | mg/kg       | 5          | ND         |
| Tetrabromodiphenyl ether | -            | mg/kg       | 5          | ND         |
| Pentabromodiphenyl ether | -            | mg/kg       | 5          | ND         |
| Hexabromodiphenyl ether  | -            | mg/kg       | 5          | ND         |
| Heptabromodiphenyl ether | -            | mg/kg       | 5          | ND         |
| Octabromodiphenyl ether  | -            | mg/kg       | 5          | ND         |
| Nonabromodiphenyl ether  | -            | mg/kg       | 5          | ND         |
| Decabromodiphenyl ether  | -            | mg/kg       | 5          | ND         |

Notes :

- (1) The maximum permissible limit is quoted from directive 2011/65/EU, Annex II

### Hexabromocyclododecane(HBCDD)

Test Method : Determination of HBCDD by GC-MS based on IEC 62321:2008.

| <u>Test Item(s)</u>            | <u>Unit</u> | <u>MDL</u> | <u>007</u> |
|--------------------------------|-------------|------------|------------|
| Hexabromocyclododecane (HBCDD) | mg/kg       | 10         | ND         |

Notes :

- (1) Reference Information: Directive 2011/65/EU recasting RoHS directive 2002/95/EC:  
Hexabromocyclododecane (HBCDD) is considered as a priority for risk evaluation and substance restriction.

### Phthalata

Test Method : Determination of phthalates by GC-MS based on EN 14372:2004.

| <u>Test Item(s)</u>                 | <u>Unit</u> | <u>MDL</u> | <u>007</u> |
|-------------------------------------|-------------|------------|------------|
| Dibutyl Phthalate (DBP)             | % (w/w)     | 0.003      | ND         |
| Benzylbutyl Phthalate (BBP)         | % (w/w)     | 0.003      | ND         |
| Bis-(2-ethylhexyl) Phthalate (DEHP) | % (w/w)     | 0.003      | ND         |

Notes :

- (1) Reference Information: Directive 2011/65/EU recasting RoHS directive 2002/95/EC:  
Bis (2-ethylhexyl) phthalate (DEHP), Butyl benzyl phthalate (BBP) and Dibutyl phthalate (DBP) are considered as a priority for risk evaluation and substance restriction.

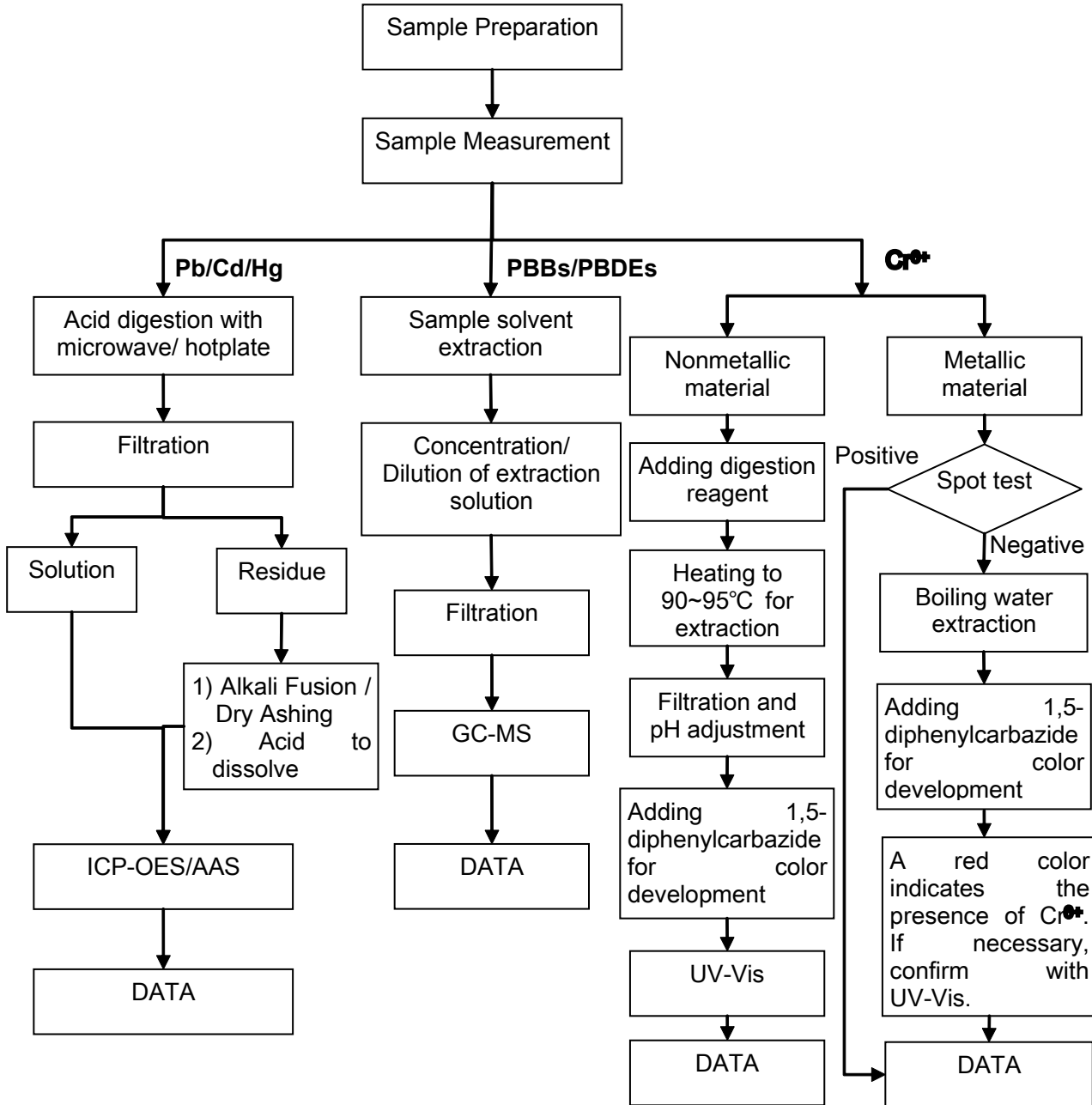
Remark: The result(s) shown is/are of the total weight of wet sample.

This document is issued by the Company subject to its General Conditions of Service printed overleaf, available on request or accessible at [http://www.sgs.com/terms\\_and\\_conditions.htm](http://www.sgs.com/terms_and_conditions.htm) and, for electronic format documents, subject to Terms and Conditions for Electronic Documents at [www.sgs.com/terms\\_e-document.htm](http://www.sgs.com/terms_e-document.htm). Attention is drawn to the limitation of liability, indemnification and jurisdiction issues defined therein. Any holder of this document is advised that information contained hereon reflects the Company's findings at the time of its preparation only and within the limits of Client's instructions, if any. The Company's sole responsibility is to its Client and this document does not exonerate parties to a transaction from exercising all their rights and obligations under the transaction documents. This document cannot be reproduced except in full, without prior written approval of the Company. Any unauthorized alteration, forgery or falsification of the content or appearance of this document is unlawful and offenders may be prosecuted to the fullest extent of the law. Unless otherwise stated, the results shown in this test report refer only to the sample(s) tested.

## ATTACHMENTS

### RoHS Testing Flow Chart

- 1) Name of the person who made testing: Michael Tso / Cutey Yu
- 2) Name of the person in charge of testing: Adams Yu / Yolanda Wei
- 3) These samples were dissolved totally by pre-conditioning method according to below flow chart (Cr<sup>6+</sup> and PBBs/PBDEs test method excluded).

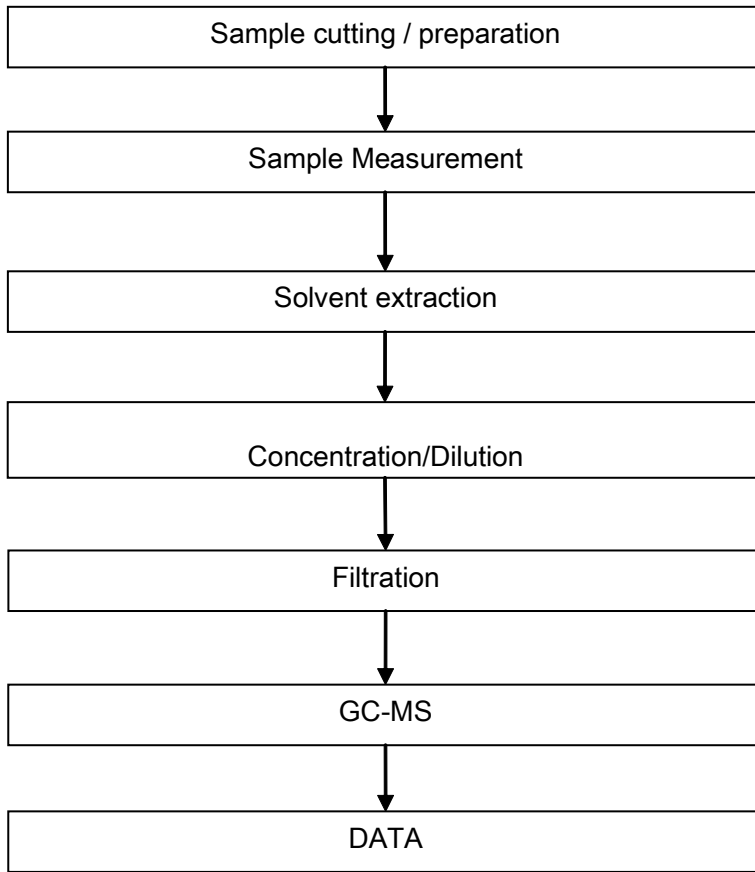


This document is issued by the Company subject to its General Conditions of Service printed overleaf, available on request or accessible at [http://www.sgs.com/terms\\_and\\_conditions.htm](http://www.sgs.com/terms_and_conditions.htm) and, for electronic format documents, subject to Terms and Conditions for Electronic Documents at [www.sgs.com/terms\\_e-document.htm](http://www.sgs.com/terms_e-document.htm). Attention is drawn to the limitation of liability, indemnification and jurisdiction issues defined therein. Any holder of this document is advised that information contained hereon reflects the Company's findings at the time of its preparation only and within the limits of Client's instructions, if any. The Company's sole responsibility is to its Client and this document does not exonerate parties to a transaction from exercising all their rights and obligations under the transaction documents. This document cannot be reproduced except in full, without prior written approval of the Company. Any unauthorized alteration, forgery or falsification of the content or appearance of this document is unlawful and offenders may be prosecuted to the fullest extent of the law. Unless otherwise stated, the results shown in this test report refer only to the sample(s) tested.

**ATTACHMENTS**

**Phthalates Testing Flow Chart**

- 1) Name of the person who made testing: Liu Qiong
- 2) Name of the person in charge of testing: Yolanda Wei

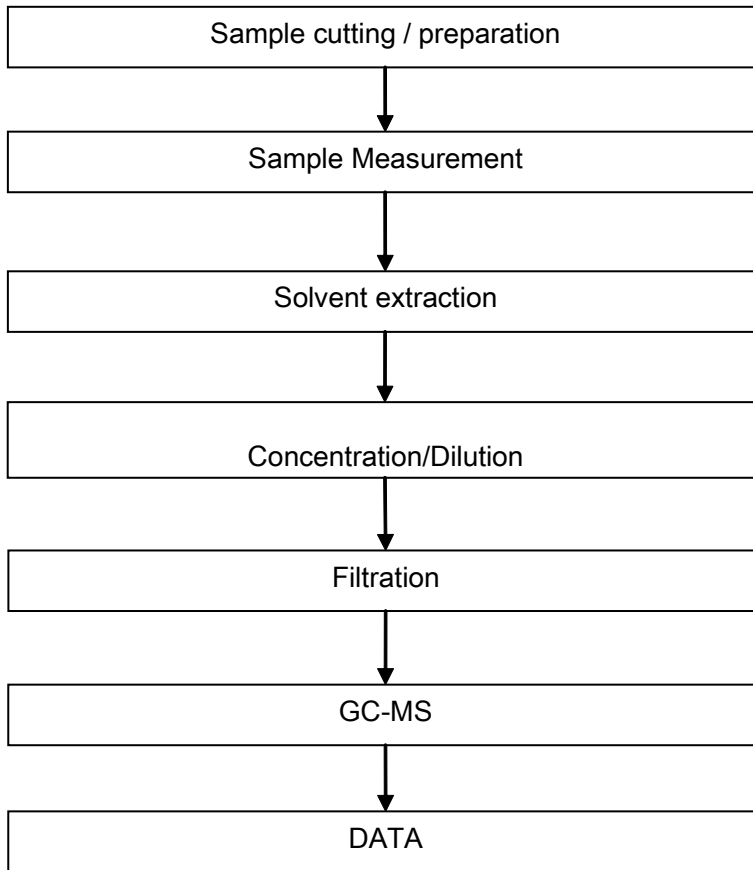


This document is issued by the Company subject to its General Conditions of Service printed overleaf, available on request or accessible at [http://www.sgs.com/terms\\_and\\_conditions.htm](http://www.sgs.com/terms_and_conditions.htm) and, for electronic format documents, subject to Terms and Conditions for Electronic Documents at [www.sgs.com/terms\\_e-document.htm](http://www.sgs.com/terms_e-document.htm). Attention is drawn to the limitation of liability, indemnification and jurisdiction issues defined therein. Any holder of this document is advised that information contained hereon reflects the Company's findings at the time of its preparation only and within the limits of Client's instructions, if any. The Company's sole responsibility is to its Client and this document does not exonerate parties to a transaction from exercising all their rights and obligations under the transaction documents. This document cannot be reproduced except in full, without prior written approval of the Company. Any unauthorized alteration, forgery or falsification of the content or appearance of this document is unlawful and offenders may be prosecuted to the fullest extent of the law. Unless otherwise stated, the results shown in this test report refer only to the sample(s) tested.

## ATTACHMENTS

### HBCDD Testing Flow Chart

- 1) Name of the person who made testing: Cutey Yu
- 2) Name of the person in charge of testing: Yolanda Wei



This document is issued by the Company subject to its General Conditions of Service printed overleaf, available on request or accessible at [http://www.sgs.com/terms\\_and\\_conditions.htm](http://www.sgs.com/terms_and_conditions.htm) and, for electronic format documents, subject to Terms and Conditions for Electronic Documents at [www.sgs.com/terms\\_e-document.htm](http://www.sgs.com/terms_e-document.htm). Attention is drawn to the limitation of liability, indemnification and jurisdiction issues defined therein. Any holder of this document is advised that information contained hereon reflects the Company's findings at the time of its preparation only and within the limits of Client's instructions, if any. The Company's sole responsibility is to its Client and this document does not exonerate parties to a transaction from exercising all their rights and obligations under the transaction documents. This document cannot be reproduced except in full, without prior written approval of the Company. Any unauthorized alteration, forgery or falsification of the content or appearance of this document is unlawful and offenders may be prosecuted to the fullest extent of the law. Unless otherwise stated, the results shown in this test report refer only to the sample(s) tested.

